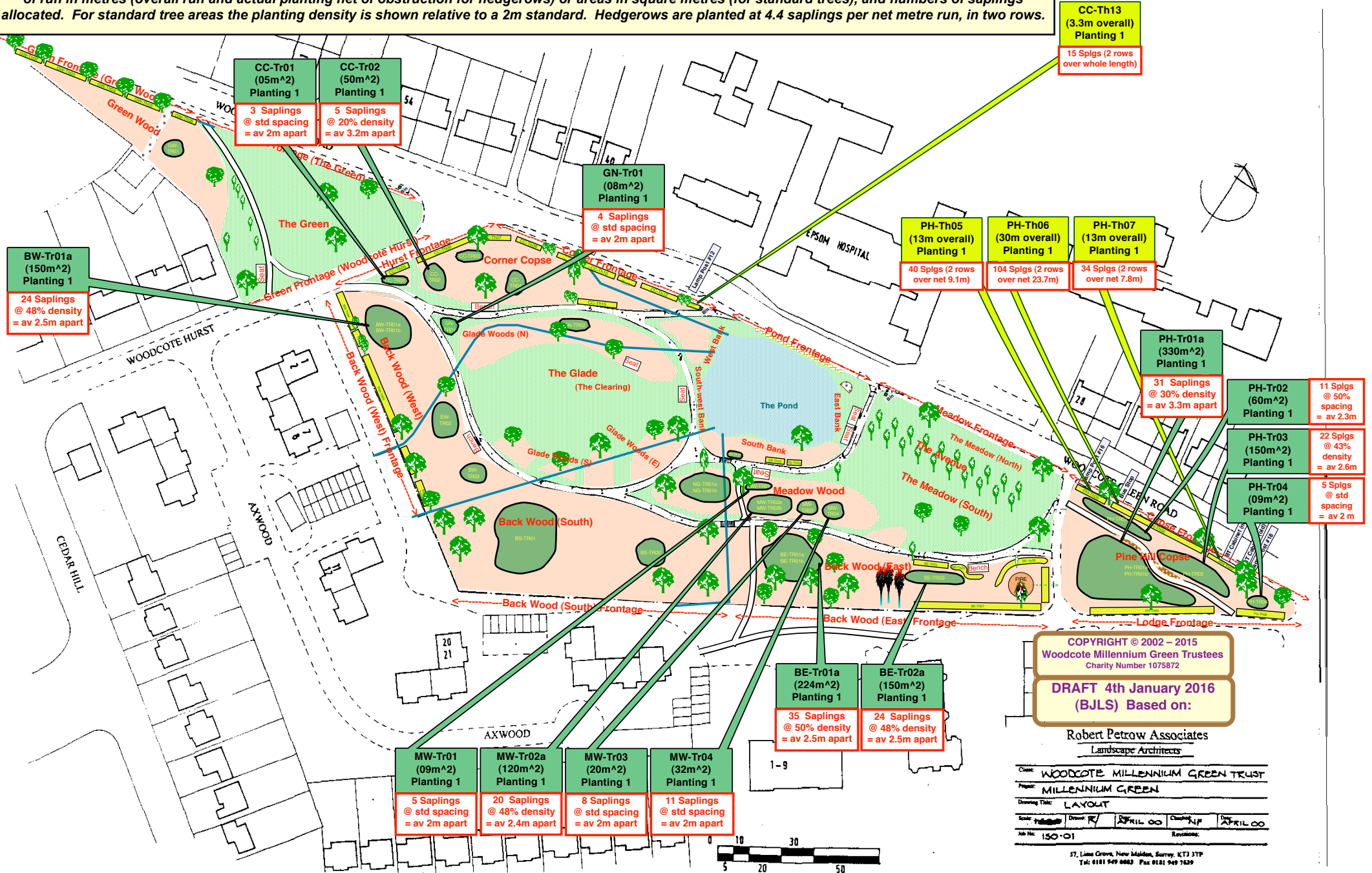


Woodcote Millennium Green – Autumn Planting November 2015 – Total of 401 Saplings

This shows all the areas identified for possible plantings for hedgerows/thickets (yellow strips) and for standard trees (dark green blobs). Those prioritised for planting in November 2015 (P1) are identified with pull-out information boxes. These show the reference code for each planting area, lengths of run in metres (overall run and actual planting net of obstruction for hedgerows) or areas in square metres (for standard trees), and numbers of saplings allocated. For standard tree areas the planting density is shown relative to a 2m standard. Hedgerows are planted at 4.4 saplings per net metre run, in two rows.

Planting Plan
Version V10



COPYRIGHT © 2002 – 2015
Woodcote Millennium Green Trustees
Charity Number 1075872

DRAFT 4th January 2016
(BJLS) Based on:

Robert Petrow Associates
Landscape Architects

Client:	WOODCOTE MILLENNIUM GREEN TRUST
Project:	MILLENNIUM GREEN
Drawing Title:	LAYOUT
Scale:	As Shown
Drawn:	RJ
Checked:	NP
Date:	APRIL 00
Job No:	150-01
Revisions:	

37, Lime Grove, New Malden, Surrey, KT3 3TP
Tel: 0181 949 6883 Fax: 0181 949 7439

